

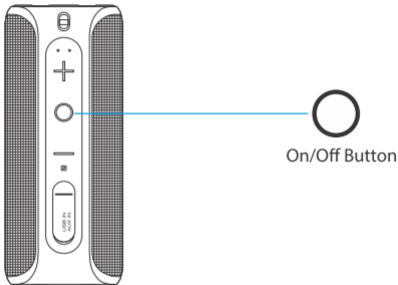
easy
mobile
GO EASY, GO MOBILE.




JOY BOX
WIRELESS SPEAKER

USER MANUAL

Bluetooth Pairing



Step 1: Long press  button 3 seconds to power on. Then the speaker will enter into Bluetooth pairing mode with the blue indicator blinking.



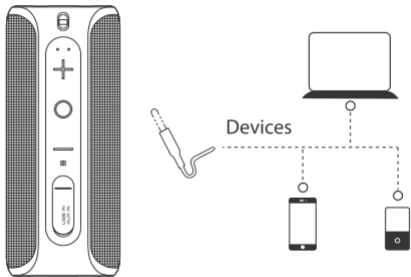
Step 2: Open the setting and find SoundCup-X on the Bluetooth name list in the phone.



Indicator light keeps on

Step 3: Clicking "Joy Box" on the list, with two "DongDong" sound and light keeping on, which means connection succeeded and can start to play music.

AUX IN Connection






The speaker also features 1*AUX audio in port, simply connect the speaker with your mobile phone/MP3 player/PC/Laptop with the 3.5mm jack audio cable. The green light will be on and you can play music via wired connection.



Note: In AUX mode, the stereo sound will be invalid.

Basic Operation

Bluetooth Mode

- 
 1. Short press when playing music for Play/Pause
 2. When a call is coming, short press to answer
 3. When a call is coming, double press to refuse the call
 4. During a call conversation, short press to hang off
- 
 1. Short press for volume up
 2. Long press for next track
- 
 1. Short press for volume down
 2. Long press for previous track

AUX IN Mode

-  Short press for volume up
-  Short press for volume down

LED Operation

Status Description	LED Definition
Power On	The default mode is Bluetooth pairing mode, with Blue light flashing. If plug 3.5mm AUX IN cable, it will enter AUX IN mode, the green light is on.
Bluetooth Mode	<p>Play/Pause: Blue light is normally on.</p> <hr/> <p>When it is over the bluetooth connection range, the blue light flashes(back to pairing status). When the speaker is in pairing mode for over 10 minutes, it will power off automatically.</p>
AUX IN Mode	Green light is normally on
Wait for Pairing	Blue light flashes.
Bluetooth Connected	Blue light is normally on.
Charging Status	Red light is on when charging; Red light will be off once fully charged.

Product Specifications

Product Name	Joy Box
Bluetooth Version	Bluetooth 4.2
Bluetooth range	10m
Driver Unit	4Ω 12W=6Wx2
Battery Capacity	2200mAh
Audio Input	Bluetooth / 3.5mm AUX IN
Working time	7~8Hrs (70% volume)
Charging time	4~4.5Hrs (Input: 5V= 1A)
S/N	≥75dB
NFC	Support
Handsfree function	Support
Dimension	71 x 73.6 x 169.6mm

Frequently Asked Questions

Q:What kind of charger should we use for the speaker?

A:All common USB chargers can be used, while we suggest the ones above 5V/1A.

Q:What if there is noise or discontinuous sound when playing?

A:The speaker can be normally used within 10m under no obstruction environment. If it is over 10m or with obstruction, there might be noise or discontinuous sound.

Q:Why will the speaker shut down automatically when it is working ?

A:When there is no bluetooth pairing or AUX IN within 10 minutes, the speaker will shut down automatically to reduce power consumption.

Q: The speaker cannot connect the once-paired cellphone.

A: First, remove the speaker's pairing name from the cellphone's Bluetooth list and then short press the Bluetooth Disconnection Button to restart pairing mode.

Q: What is the working sequence of the speaker?

A: The priority is AUX IN input, phone call in Bluetooth mode and then playing music Bluetooth mode.

Q: The speaker cannot be started up in a normal situation.

A: Please plug in the charger and try in a few minutes.

*This speaker supports mobile phones and tablet PCs etc. Here this User Manual is illustrated based on mobile phones.



 easym.com.br

 [/easymobile.br](https://www.facebook.com/easymobile.br)

 [@easy.mobile](https://www.instagram.com/easy.mobile)

Product support:

Email: support@easym.com.br