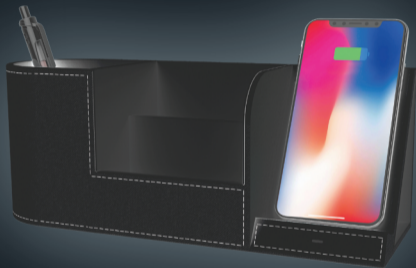


easy
mobile
GO EASY, GO MOBILE.

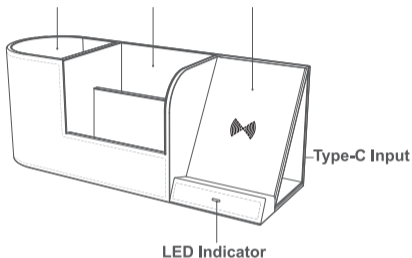


WIRELESS CHARGING STAND
SMART ORGANIZER

USER MANUAL

**PLEASE READ INSTRUCTIONS
BEFORE USING THE PRODUCT.**

Brush pot Card holder Wireless charger



Parameter specification

Model: Smart Organizer

Input voltage/current: 5V / 2.0A, 9V / 2.0A

Output power: 5W / 7.5W / 10W

Product standard: Qi Standard

Charging frequency: 110-148 Khz

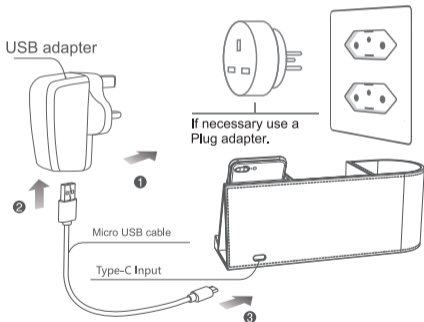
Transmission Distance: = 7mm

Efficiency: = 75%

Product size: Larg.: 283mm - Alt.: 112.5mm - Prof.: 92.5mm

INSTALLATION

1. Plug the power adapter into the socket.
2. USB cable one side connects the power adapter.
3. Blue light is the wireless charging indicator light.
4. 4. Insert the cell phone that has charging function by induction into the wireless charging stand.
The indicator light changes to green from blue if it starts to charge. The light will turn blue if you remove the phone, which means the wireless charger goes into standby mode.



Note: Only the QC2.0 / QC3.0 standard power adapter can support fast loading of the product. Adapters and any other device not described in this manual, do not are included and must be purchased separately.



ATTENTION NOTES IMPORTANT

- 1-** Please remove the protective case (except the receiver) when charging to maintain high efficiency. We suggest that you use a 2A adapter for the best results.
- 2-** Do not disassemble the charger or dispose of in fire and water as this may cause a short circuit or leakage.
- 3-** Do not use wireless charger in very hot, humid or corrosive environments to avoid circuit damage and leakage.
- 4-** Do not place objects that have a magnetic charge or chip (ID card, bank card, etc.) on the wireless charging stand to prevent failure.
- 5-** Persons with cardiac prostheses, (pacemakers, cochlear implants and others.) Please keep at least 20cm from the wireless charger to avoid possible interference with the implanted device.
- 6-** Please do not let children use the wireless charger as a toy to avoid unnecessary accidents.

STATUS AND PROTECTION FUNCTION

1. Blue light: Standby
2. Green light: Charging
3. Flashing blue light: location of mobile phone in deviation or more temperature protection or FOD trigger.



DEVICE DISPOSAL ELECTRONIC AND ELECTRICAL

Este símbolo indica que o dispositivo elétrico e eletrônico deve ser coletado separadamente. Este produto é designado para coleta separada em um ponto de coleta apropriado. Não elimine como lixo doméstico.

Package contains:

- 1 Wireless Charger
- 1 Type-C Cable
- 1 User Manual



1

**GARANTIA
1 ANO**

easy
mobile
GO EASY, GO MOBILE.

 easym.com.br

 [/easymobile.br](https://www.facebook.com/easymobile.br)

 [@easy.mobile](https://www.instagram.com/easy.mobile)

Product Support:

E-mail: support@easym.com.br