

**easy**  
**mobile**  
GO EASY, GO MOBILE.



WIRELESS CHARGING PAD  
**POWER MATE 5**

**USER MANUAL**

## IMPORTANT

Read before using this product.

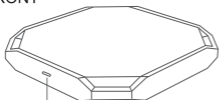
### SPECIFICATIONS

Frequency: 110-205KHz  
Charging efficiency: 73%  
Charging distance: 10mm

Input: DC5V / 1.5A  
Dimension: 70x70x10mm  
Weight: 389

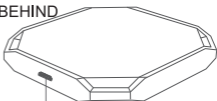
### PRODUCT STRUCTURE

FRONT



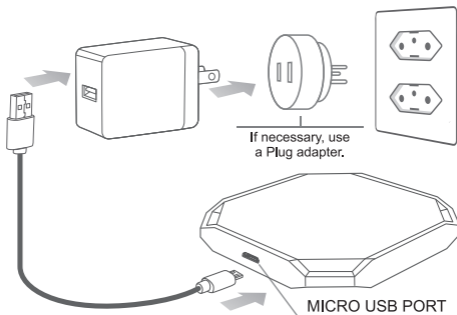
LED LIGHT

BEHIND



MICRO USB PORT

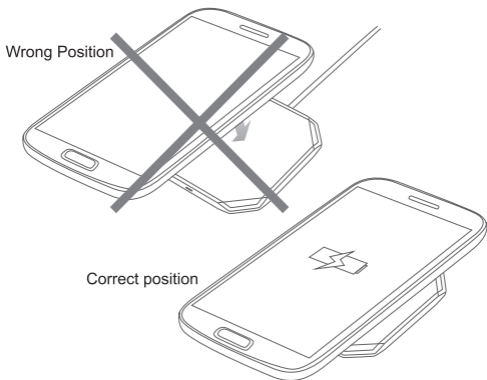
### PRODUCT USE



\* Images are illustrative only and do not include adapter, smartphones and any other device not described in this manual.

# HOW TO USE THE WIRELESS CHARGER

- 1-** Connect the wireless charger to a power source using the Micro USB cable. The red light will flash for one second when you turn on.
- 2-** To charge a device, place it in the center of the wireless charger. After a few seconds, the red light will start to flash. This means that the charger is charging the device.
- 3-** When the device is fully charged, the red light will be turned off.



## RECOMMENDATIONS AND MAINTENANCE OF YOUR POWER MATE 5



- 1-** Clean the wireless charger regularly with a dry cloth. Do not use soap, detergent or chemical.
  - 2-** Keep the wireless charger free of dust, lint, dirt, etc.
  - 3-** Be sure to properly disconnect the Micro USB Cable from the wireless charger and power source before cleaning and storing it.
  - 4-** Use the wireless charger only in the following temperature range: 14° to 40°.
  - 5-** Keep the wireless charger at least 30cm from any TV or radio device.
  - 6-** Avoid friction, scratches and falls from the wireless charger.
  - 7-** Do not place heavy objects on it.
  - 8-** Do not pull the wireless charger by the cable to disconnect it.
  - 9-** Keep the cable extended when the wireless charger is connected.
-



## INFORMATION OF SECURITY

- 1-** Connect the wireless charger to a suitable electrical outlet.
- 2-** Connect the wireless charger to an easily accessible location for easy disconnection.
- 3-** When using the wireless charger, keep it away from heat and flammable materials.
- 4-** Do not attempt to open the wireless charger.
- 5-** Leave the cord of the wireless charger so that no one can stumble.
- 6-** Keep the wireless charger away from children.
- 7-** Unplug the wireless charger from the wall outlet if you are not going to use it for an extended period of time.
- 8-** Do not use the wireless charger if you notice any visible defect.
- 9-** Do not leave the wireless charger near magnetic devices.

Package contains:

1 Wireless charger  
1 Micro USB cable  
1 User Manual



## FCC LEGAL NOTICE

This device complies  
with part 15 of the FCC rules.

### **The operation is subject to the two following conditions:**

- 1 -** This device may cause harmful interference.
- 2 -** This device must not accept any interference received, including interference that may cause undesired operation. The manufacturer is not responsible for any radio or TV interference caused by unauthorized modifications to this equipment.

Such modifications could void the user's authority to operate the equipment. This equipment has been tested and found to comply with the limits for a Class B digital device, pursuant to Part 15 of the FCC Rules. These limits are designed to provide reasonable protection against harmful interference in a residential installation. This equipment generates, uses and can radiate radio frequency energy and, if not installed and used in accordance with the instructions, may cause harmful interference to radio communications. However, there is no guarantee that interference will not occur in a particular installation. If this equipment does cause harmful interference to radio or television reception, which can be determined by turning the equipment off and on, the user is encouraged to try to correct the interference by one or more of the following measures:

- Reorient or relocate the receiving antenna.
  - Increase the separation between the equipment and the receiver.
  - Connect the equipment to an outlet on a circuit different from the one to which the receiver is connected.
  - Consult the dealer or an experienced radio / TV technician for help.
- Experienced for help or assistance.

**This device complies with Part 15 of the FCC Rules and the Industry Canada license-exempt RS5 standard.**

**The operation is subject to the two following conditions:**

- 1 -** This device may cause harmful interference.
- 2 -** This device must not accept any interference received, including interference that may cause undesired operation. The manufacturer is not responsible for any radio or TV interference caused by unauthorized modifications to this equipment.

Such modifications could void the user's authority to operate the equipment. According to Industry Canada regulations, this radio transmitter may only operate using an antenna of a type and maximum (or lower) gain approved for the transmitter by Industry Canada. To reduce the potential for radio interference for other users, the type of antenna and its gain must be chosen in such a way that the isotropically equivalent radiated power (e.i.r.p.) is not greater than that necessary for successful communication.

**DISPOSAL OF DEVICES  
ELECTRONIC AND ELECTRICAL**



This symbol indicates that the electrical and electronic device must be collected separately. This product is designated for separate collection at an appropriate collection point. Do not dispose of as household waste.

- If the device uses batteries, they must be removed from the device and disposed of at an appropriate collection center.
- If the batteries cannot be removed, do not attempt to do this yourself, as this must be done by a qualified professional.
- Selective collection and recycling help to conserve natural resources and prevent negative consequences for human health and the environment that may result from incorrect disposal.
- For more information, contact your dealer or the local authorities responsible for waste management.



Within 12 months from the date of purchase of the product, if there is a quality problem as defined in the warranty, please contact us at any time.



---

**Product support:**

E-mail: [support@easym.com.br](mailto:support@easym.com.br)